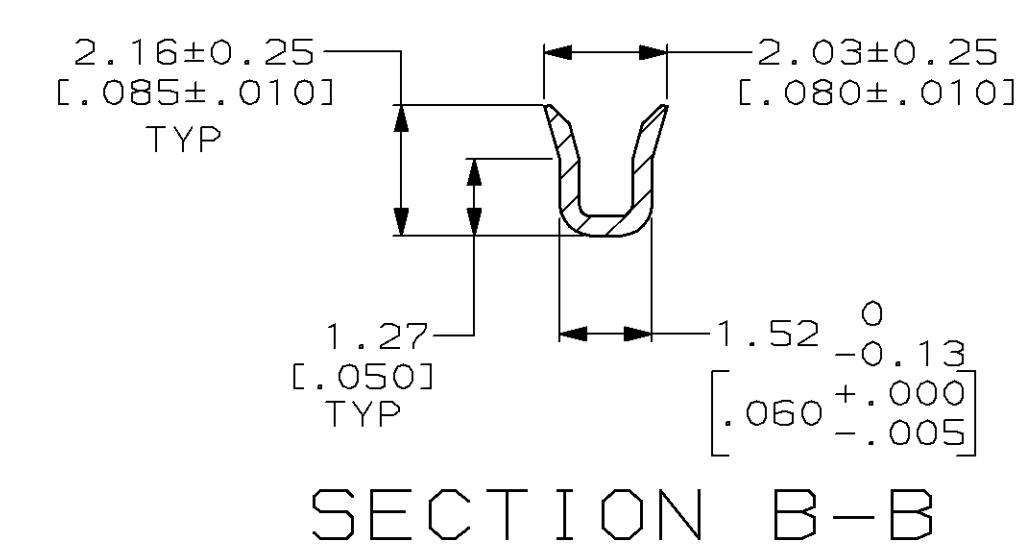
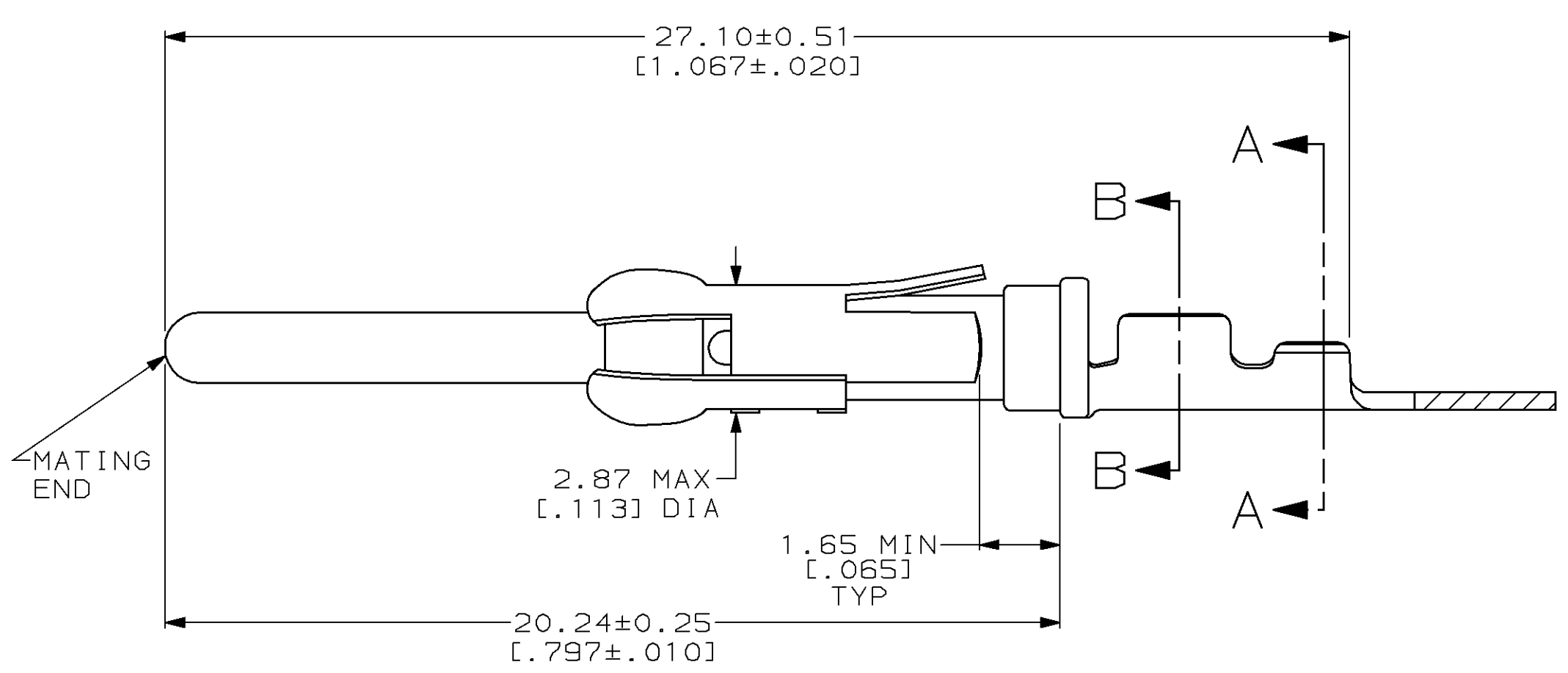
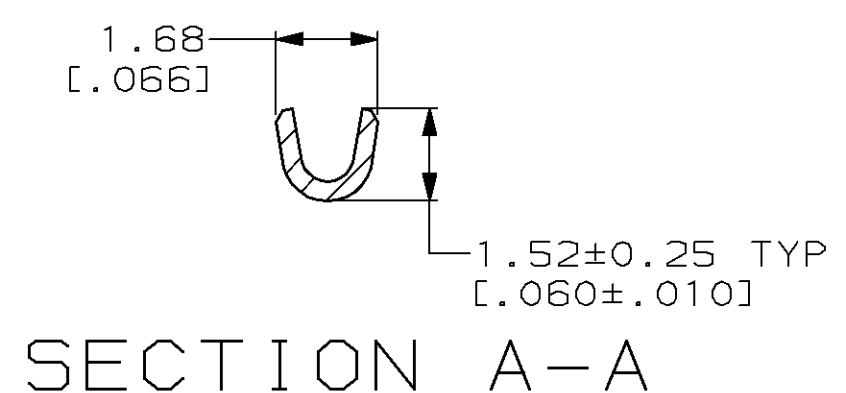
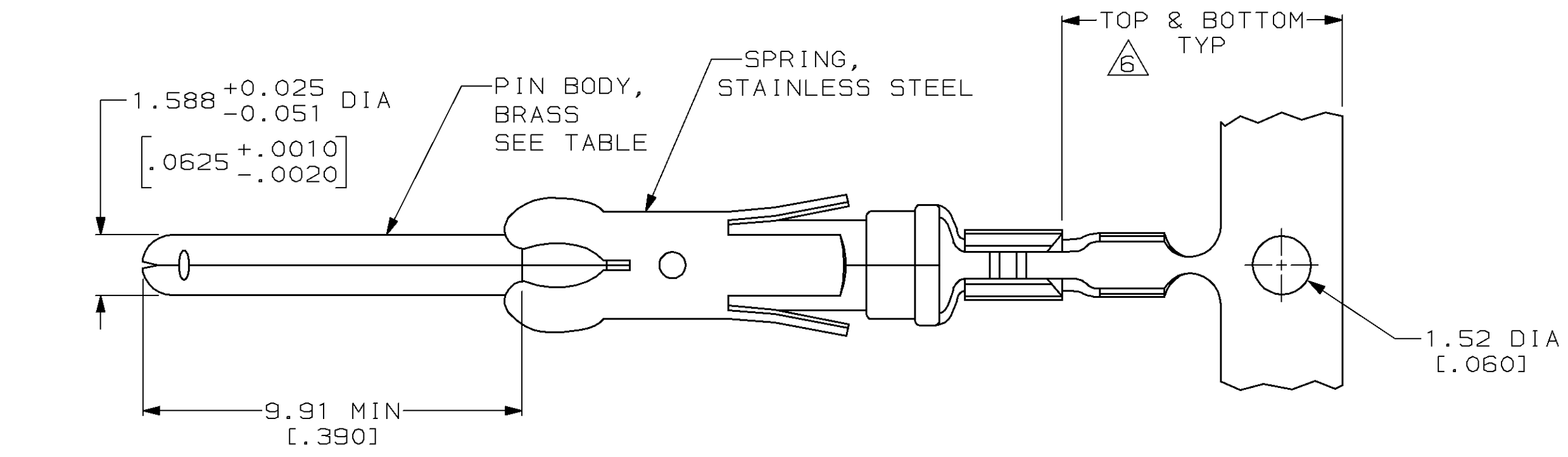


LOC	DIST	P	F	ZONE	LTR	DESCRIPTION	DATE	APPD
FT	47				U	REDRAWN & REV ECN BD3867	7-18-91	-
					V	ADDED 1-3 PER NPR 3597 & REV PER BD6295	06/03/92	GS
					W	OBS 1-1 PER EC 0020-1128-94	11/15/94	GS
					W	OBSOLETE -5 & 1-3 PER EC 0020-607-96	18 NOV 96	GS
					Z	REV PER EC 0320-133-97	7-24-97	PB



- 1. REVERSE REELED FOR MINI-APPLICATOR.
- 2. 0.76µm [.000030] MIN GOLD PER MIL-G-45204 ON MATING END FOR A LENGTH OF 5.08 [.200] MIN WITH GOLD FLASH ON THE REMAINDER, OVER 1.27µm [.000050] MIN NICKEL PER QQ-N-290.
- 3. 0.76µm [.000030] MIN GOLD PER MIL-G-45204 IN MATING END FOR A LENGTH OF 5.08 [.200] MIN WITH A UNIFORM GRADIENT TO 0.25µm [.000010] MIN GOLD PER MIL-G-45204 ON THE REMAINDER, OVER 1.27µm [.000050] MIN NICKEL PER QQ-N-290.
- 4. 0.38µm [.000015] MIN GOLD PER MIL-G-45204 ON MATING END FOR A LENGTH OF 5.08 [.200] MIN WITH GOLD FLASH ON THE REMAINDER OVER 1.27µm [.000050] MIN NICKEL PER QQ-N-290.
- 5. 1.27µm [.000050] MIN GOLD PER MIL-G-45204 ON MATING END FOR A LENGTH OF 5.08 [.200] MIN WITH GOLD FLASH ON THE REMAINDER OVER 1.90µm [.000075] MIN NICKEL PER QQ-N-290.
- 6. GOLD PLATING NEED NOT APPEAR IN THIS AREA.
- 7. WIRE RANGE 26-30 AWG.
- 8. INSULATION RANGE 0.36 [.014]-0.76 [.030] DIA.
- 9. 0.38µm [.000015] MIN GOLD PER MIL-G-45204 ON MATING END FOR A LENGTH OF 5.08 [.200] MIN, 1.27µm [.000050] MIN TIN-LEAD PER MIL-T-10727 FOR A LENGTH OF 5.69 [.224] MIN ON OPPOSITE END, BOTH OVER 1.27µm [.000050] MIN NICKEL PER QQ-N-290 ON ENTIRE CONTACT.

OBSOLETE	1	9	-	1-66393-3
OBSOLETE	1	5	-	1-66393-1
	1	2	66406-4	66393-8
	1	4	-	66393-7
OBSOLETE	1	3	66406-1	66393-5
		2	66406-4	66393-4
		4	-	66393-3
		3	66406-1	66393-1
	REELING	PIN BODY FINISH	LOOSE PIECE REF	PART NO

DO NOT SCALE PRINT. UNLESS SPECIFIED DIMENSIONS IN mm [INCHES] TOLERANCES ON: 2 PLC DEC ± 0.13[.005] 3 PLC DEC ± - ANGLES ± -	DR 7-18-91 R.SHIREY CHK 8-15-91 R.STONE APPD 8-19-91 J.WESTMAN APPD 8-19-91 W.PARKER	AMP Incorporated Harrisburg, PA 17105-3608 NAME PIN ASSEMBLY, .062, TYPE III+		
MATERIAL SEE CALLOUTS	PRODUCT SPEC -			
FINISH SEE TABLE	APPLICATION SPEC -	SIZE C	CAGE CODE 00779	DRAWING NO 66393
	WEIGHT -	SCALE 8:1		SHEET 1 OF 1